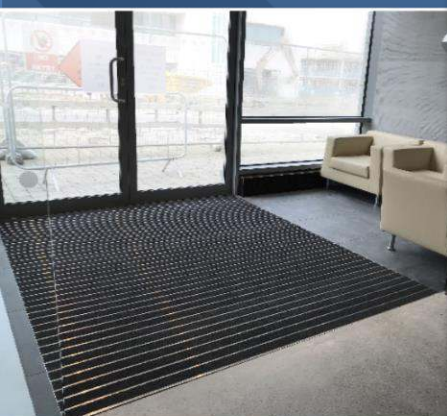
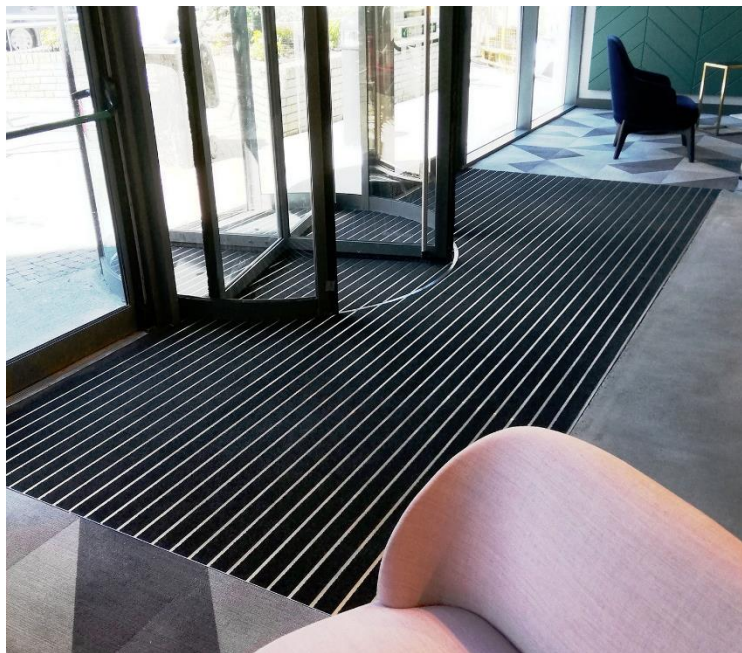


MODUS

Interlocking aluminium entrance mat

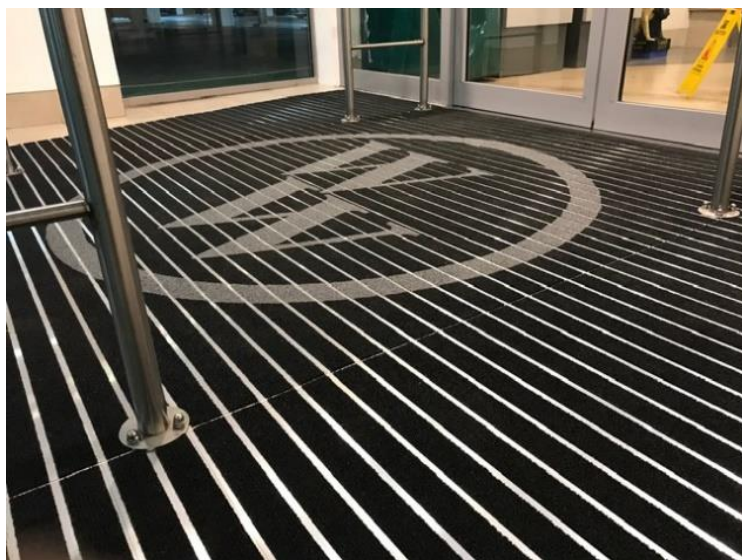


MODUS



MODUS solid construction is performing in the most demanding commercial entranceway environments.

MODUS scraper grid, complete with extra wide active pile wipers ensures maximum moisture and debris removal and retention greatly enhancing safety levels in wet conditions.



MODUS entrance matting systems are manufactured to ISO9002 standards and conform to BS8300 DDA regulations. The EMD warranty is built on an inventory of industry leading materials for long, dependable service.

- *Extra Wide Treads*
- *Recessed or surface fitting*
- *Excellent Water Absorption*
- *Available in different colours*
- *Available with logo design*
- *Interlocking click system*

MODUS is out front at many leading High Street facilities. Its clean lines and elegant appearance make it an easy choice for any commercial installation. **MODUS** provides a compelling alternative wherever aluminium grid matting is preferred.

A closed construction design, **MODUS** deals with windblown and footborne grit avoiding the need to constantly lift the matting for cleaning. The **MODUS** construction ensures optimum collection of moisture and soilage at the contact tread surface from where it can be easily removed by vacuum cleaning.

With a range of contact treads to suit internal or outdoor installations, **MODUS** is an ideal choice for any matting specification.

MODUS is manufactured in single width panels of up to 4 metres in length for a seamless appearance and can be supplied to suit any depth of recess frame.

Frames: Available in aluminium or stainless steel. Straight lengths or notched profiles for site adjustment to curves. Choice of ramp and threshold profile for surface fitment.

MODUS

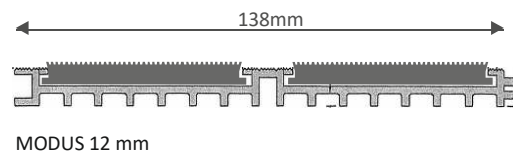
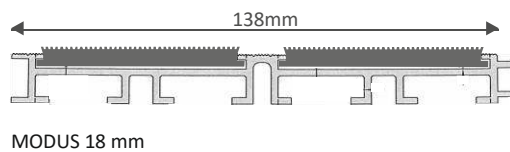
Interlocking Entrance Matting

Description

MODUS is a primary matting system for specification in commercial applications where the removal of footborne and wheeled-in soilage at entranceways is essential in retail stores, airports, shopping centres, schools and hospitals. **MODUS** will withstand heavy and wheeled traffic use.

The matting can be supplied in single width panels of up to 4000mm for a seamless appearance and can easily be supplied to the most demanding design requirement.

The modules may be surface laid or recess fitted as required. All contact treads are replaceable for refurbishment purposes.



Maximum length per module:	4000mm
Maximum width per module:	142mm
Maximum weight per module:	8kg
Depth:	12mm or 18mm
Construction:	Closed
Total weight (kg/m ²):	15kg
Max static load (kg/cm ²):	100
Dynamic load (kg) 2 wheels 80mm, 20,000 passes	200

Tread Pile Material:	ACTIVE
Manufacturing process/type:	100% PA6 Tufted, 1/8" Cut pile Non-woven
Backing:	PC
Backing Total Height:	8mm 3560
Total weight g/m ² :	Commercial 32
Use classification:	
Colour fastness to light:	≥ 5
Colour fastness to rubbing, dry & wet:	≥ 4
Colour fastness to water:	≥ 4
Colour fastness to soiling:	≥ 3.5
Flammability:	Cfl,s1
AbZ No:	Z-156.601-1165

