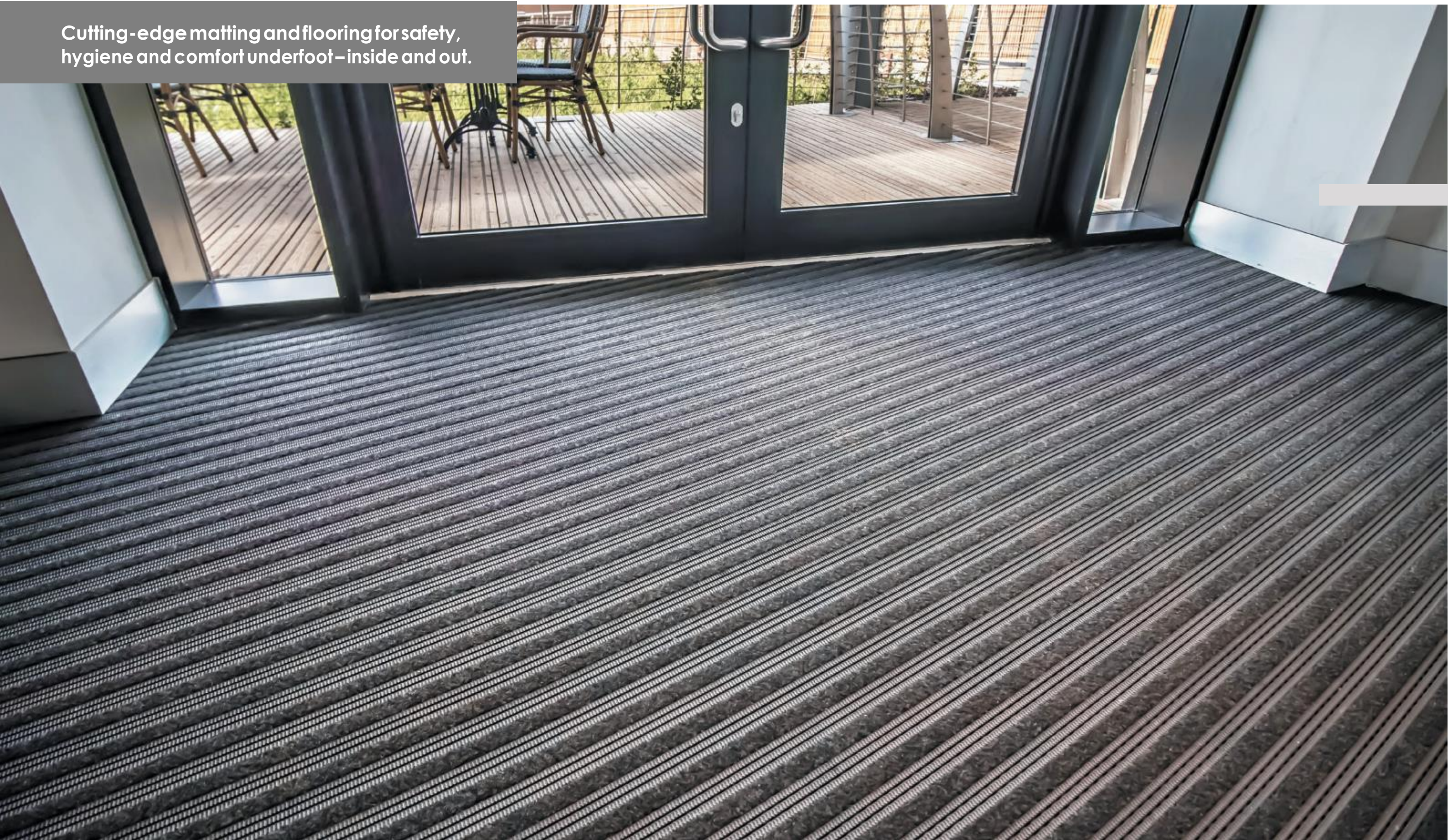


FRONTRUNNER ENTRANCE MATTING

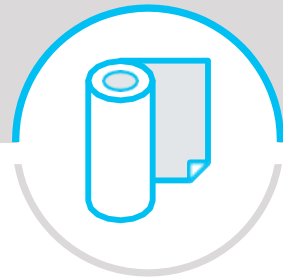


Cutting-edge matting and flooring for safety,
hygiene and comfort underfoot – inside and out.



When you purchase Frontrunner, you're investing in extensive know-how that comes from over 50 years of designing, testing and manufacturing matting solutions for a huge range of applications and industries.

That's why we offer three levels of service:



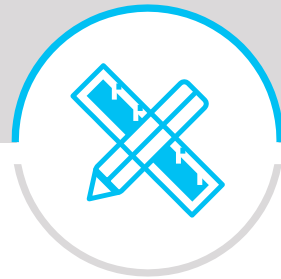
GENERAL

The manufacturer designs and manufactures an extensive range of multi-purpose matting for all kinds of environments and needs. Whether you're looking to prevent slips and trips, give your employees comfort underfoot, protect delicate items from damage or ensure dirt removal in busy buildings, we have you covered.



SPECIALIST

Over the last 50 years, they have had the privilege of working with many of our customers to develop matting that meets specific needs. Many of these specialist mats have become part of our core product range.

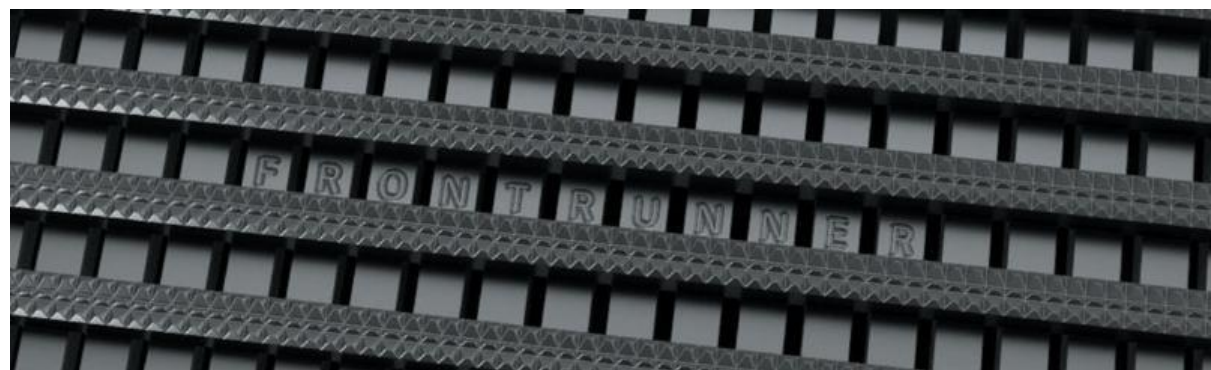


BESPOKE

We realize that not every flooring need can be solved with a product from our core range, so if we can't exactly meet your requirements, we'd love to talk to you about creating a custom solution. Get in touch with us with what you need – and we'll do our best to make it for you.

Quality guaranteed

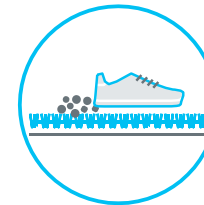
All Frontrunner mats are brand stamped to give you the confidence you're buying a genuine Frontrunner product.



Why Frontrunner entrance matting?

Your entrance is the first thing that clients, customers and visitors will see, so it pays to make a good impression.

Our Frontrunner entrance range is designed with not only safety, durability and cleanliness in mind, but also style and aesthetics – we know how important it is for entrance flooring to seamlessly integrate with the existing interiors of the building.



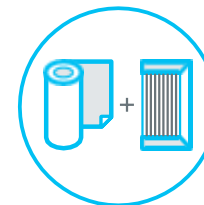
Stop dirt at the door

Frontrunner's unique 'scrape and clean' system removes and traps dirt, debris and moisture, effectively protecting internal floor finishings and reducing cleaning costs.



Easy to order, simple install

Flexible formats makes ordering a breeze: choose from rolls in standard widths and 10m lengths, or order a custom size to fit your space. Installation is also simple – the one-piece construction means you can cut to fit on site, with no previous site visits needed.



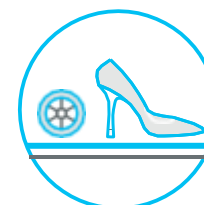
Seamless integration

From recessed to surface-mounted applications, Frontrunner fits seamlessly with all well depths and contours effortlessly to the subfloor. There's also low profile options for integration with luxury vinyl tiles, carpet and ceramic.



Use indoor or outdoor

The Frontrunner range includes matting designed specifically to remove dirt and moisture from high traffic interior areas, plus options for external matting to protect against large debris and adverse weather.



Complies with all H&S requirements

Our Frontrunner mats deliver high slip resistance, superior drainage and an excellent fire rating. All our mats are heel- and wheel-proof, and don't interfere with security systems, making them ideal for commercial and retail environments.

Building your entrance system

With over 50 style and colour combinations to choose from, it's easy to build a system that suits your environment and needs. Depending on your available space and expected traffic volume, we recommend choosing primary matting to scrape and trap dirt, and secondary matting to clean and remove moisture.



Primary Scrape

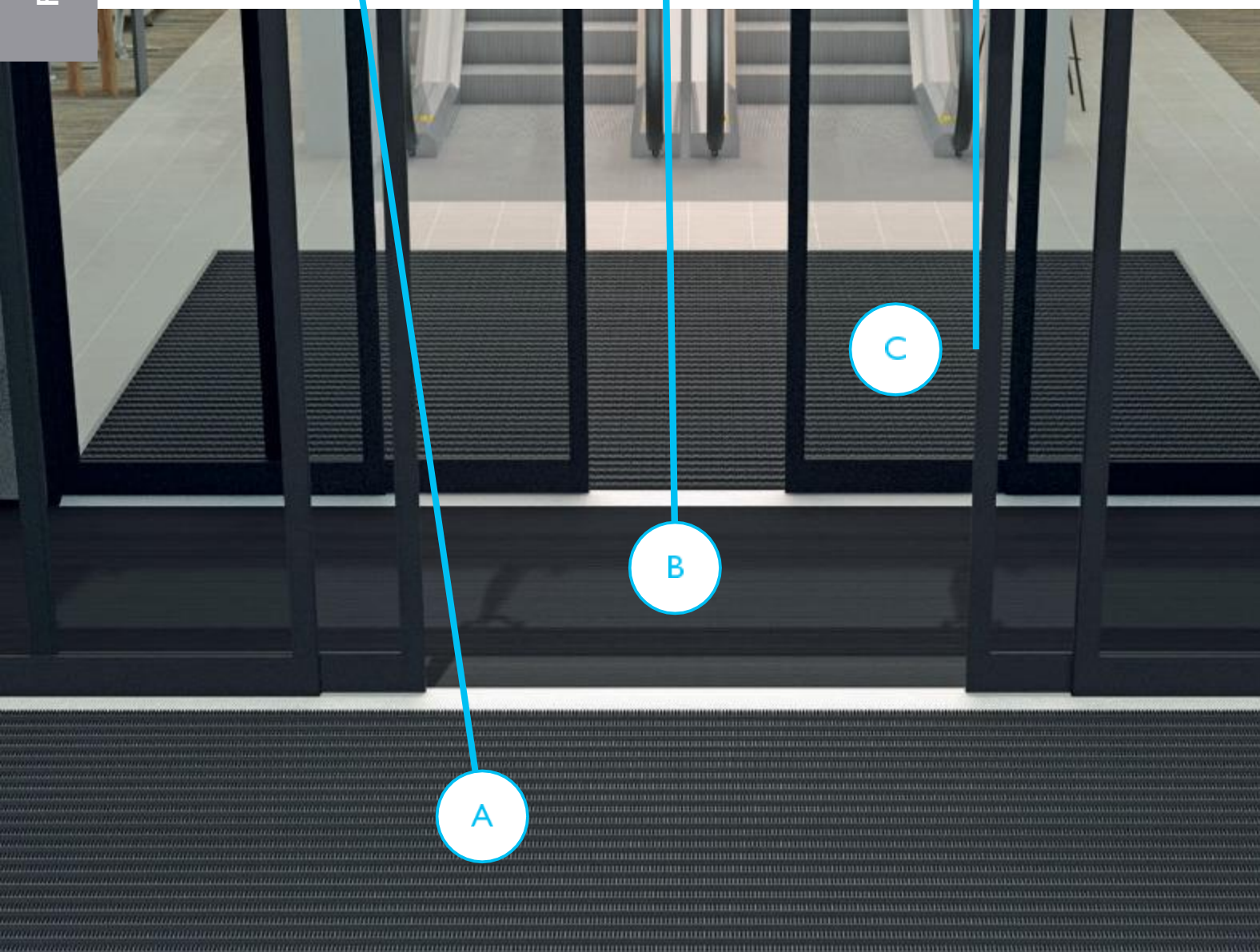


Primary/Secondary Clean



Secondary Dry

FRONTRUNNER



Which Fronrunner product is right for you?

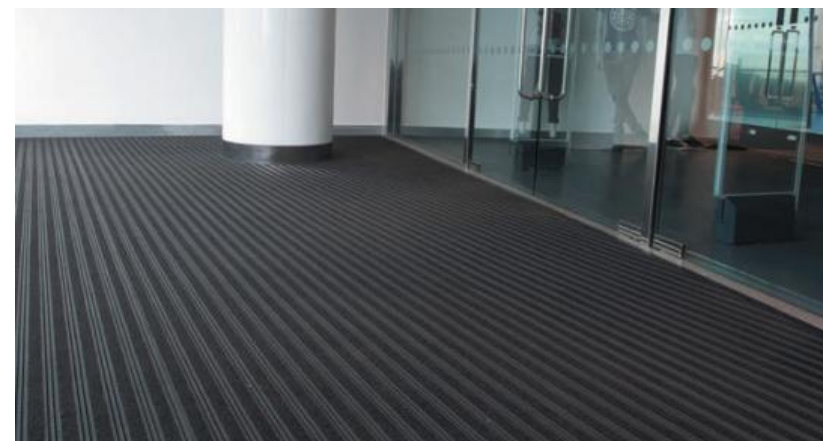
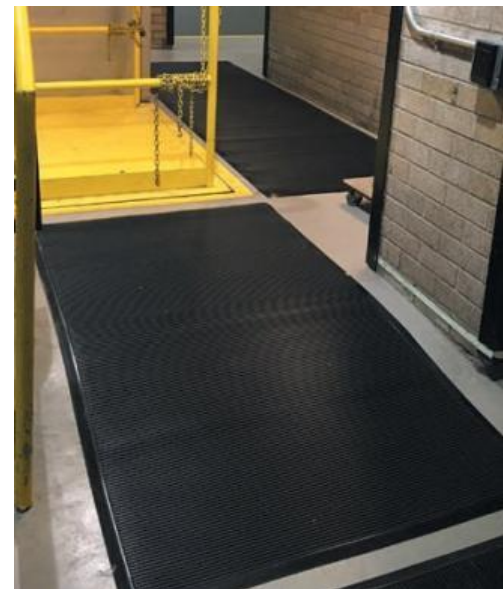
This chart will help you choose the right mat for your needs, but if you have any questions, contact us – we'll be delighted to help.

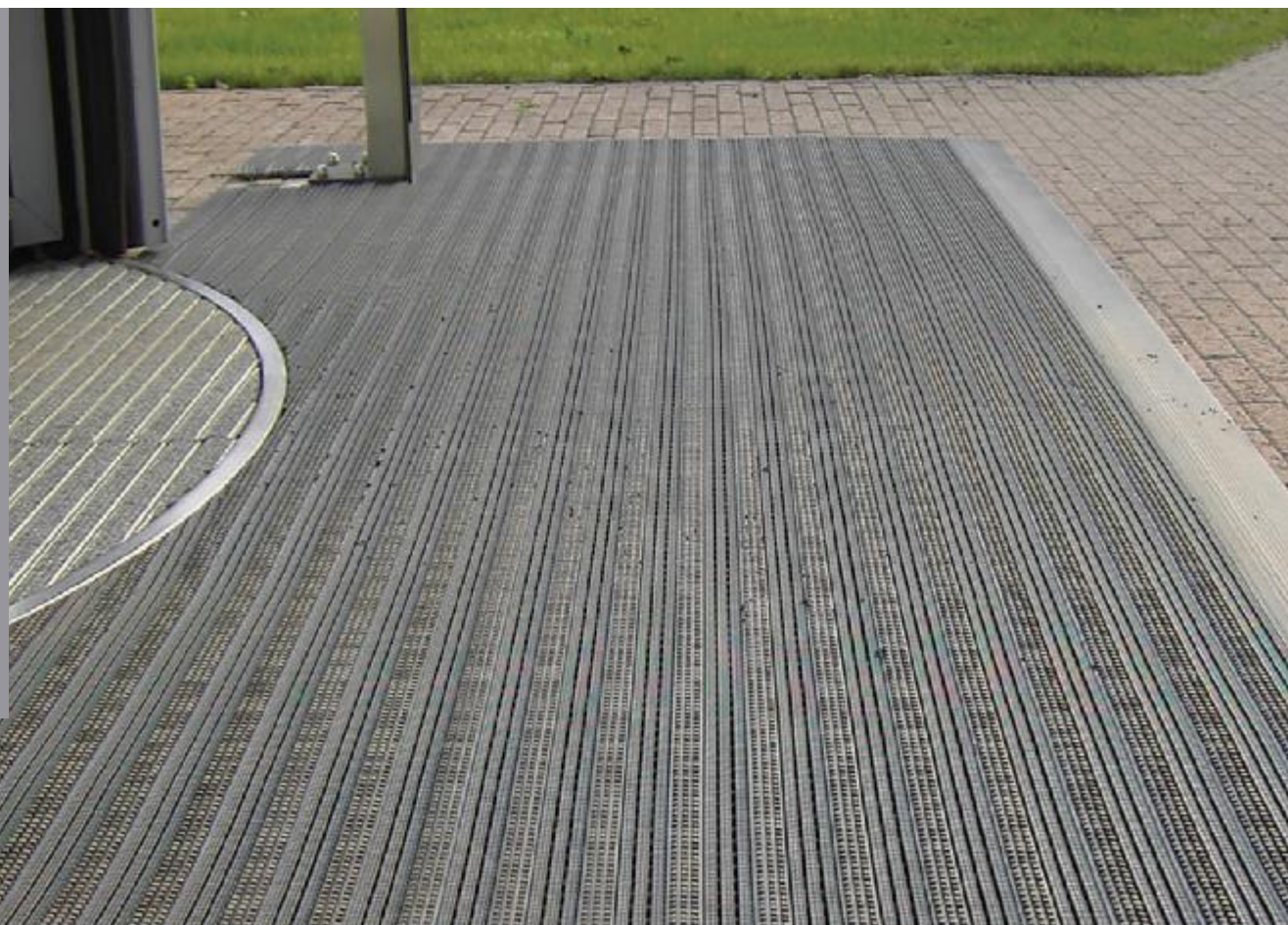
ENTRANCE MATTING				
Product	Slip resistance	Scraper	Moisture removal	Location
VINYL OPEN GRID CONSTRUCTION - PRIMARY MATTING				
Fronrunner Entry Slip-resistant, open-grid entrance matting designed for high traffic areas.	●●●○	●●●○	●●○○	(B)
Fronrunner XT Extra slip-resistant interior and exterior entrance matting perfect for high traffic areas.	●●●●	●●●○	●●○○	(A) (B)
VINYL OPEN GRID CONSTRUCTION WITH BRUSH INSERTS - PRIMARY MATTING				
Fronrunner Brush External entrance matting with heavy-duty brush inserts for maximum dirt removal.	●●●●	●●●●	●●●○	(A)
Fronrunner Brush Wide Extra wide external matting with brush inserts designed for trapping large debris.	●●●●	●●●●	●●●○	(A)
VINYL OPEN GRID CONSTRUCTION WITH ABSORBENT INSERTS - SECONDARY MATTING				
Fronrunner Plus Internal entrance matting with carpet inserts for maximum moisture removal.	●●●○	●●○○	●●●●	(B) (C)
VINYL OPEN RIBBED CONSTRUCTION WITH A SOLID BACK - SECONDARY MATTING				
Fronrunner SB Solid-backed, ribbed entrance matting designed for internal and external areas with no mat well.	●●●○	●●●○	●●○○	(B)
Fronrunner SB+ Solid-backed entrance matting with carpet inserts for maximum moisture removal in internal areas.	●●●○	●●○○	●●●●	(B) (C)



FRONTRUNNER® ENTRANCE MATTING

Set the scene with Frontrunner, an integrated flooring system that flows seamlessly from outside to inside





FRONTRUNNER® BRUSH

External entrance matting with heavy-duty brush inserts for maximum dirt removal.

Stop snow, ice and dirt in its tracks with Frontrunner Brush, an extra aggressive entrance mat designed for extreme weather conditions.

Heavy-duty brush strips scrape shoes clean, while the open grid traps and collects the debris, preventing it from being walked inside.

Seamless integration

Choose from modules with ramped PVC edging, rolls in standard widths and 10m (33') lengths, or order a custom size.

Simple installation

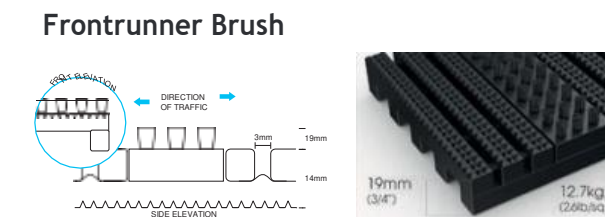
One-piece construction means you can cut to fit on site, with no previous site visits needed.

Easy to maintain

Simply roll or lift to clean, no special tools needed.

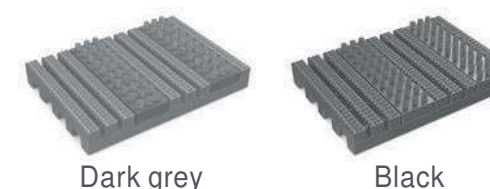
FEATURES	BENEFITS
Diamond cut pattern	Slip resistant, high soil removal
Two-layer, open-grid construction	Excellent drainage
Nylon brush inserts	Scrapes shoes clean
Made from flexible PVC	Easy to cut to fit on site, contours to uneven surfaces
Comes in 10m (33') rolls or modules	Seamless installation

STANDARD SIZES	
	Frontrunner Brush
Height	14 - 19mm (9/16" - 3/4")
Standard roll options	10 x 0.6m (33' x 2') 10 x 0.91m (33' x 3') 5 x 1.2m (16' 6" x 4')
Standard module options	0.8 x 1.2m (2'7" x 4') 1 x 1.5m (3'3" x 4'11") 1.1 x 2m (3'7" x 6'7")
Weight	12.7 kg/m ² (2.6 lb/sq.ft)



Surface modules are supplied with factory fitted PVC ramped edging to four sides.

STANDARD COLOURS



More colours available on request

Please visit www.facilityflooring.ie for more information about this product.



FRONTRUNNER® BRUSH WIDE

Extra wide external matting with brush inserts designed for trapping large debris.

Large debris is no match for Frontrunner Brush Wide, a hard-wearing entrance mat specifically designed to trap stones, snow, ice and shingle.

Heavy-duty brush strips with bristles scrape shoes clean, while the extra-wide open grid traps and collects the large debris, preventing it from being walked inside.

Seamless integration

Choose from modules with ramped PVC edging, rolls in standard widths and 10m (33') lengths, or order a custom size.

Simple installation

One-piece construction means you can cut to fit on site, with no previous site visits needed.

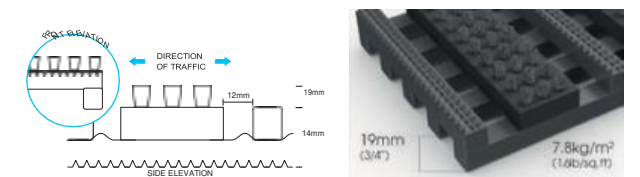
Easy to maintain

Simply roll or lift to clean, no special tools needed.

FEATURES	BENEFITS
Diamond cut pattern	Slip resistant, high soil removal
Two-layer, open-grid construction	Excellent drainage
Nylon brush inserts	Scrapes shoes clean
Made from flexible PVC	Easy to cut to fit on site, contours to uneven surfaces
Comes in 10m (33') rolls or modules	Seamless installation

STANDARD SIZES	
Frontrunner Brush Wide	
Height	14 - 19mm (9/16" - 3/4")
Standard roll options	10 x 0.6m (33' x 2') 10 x 0.91m (33' x 3') 5 x 1.2m (16' 6" x 4')
Standard module options	0.8 x 1.2m (2'7" x 4') 1 x 1.5m (3'3" x 4'11") 1.1 x 2m (3'7" x 6'7")
Weight	7.8 kg/m ² (1.6 lb/sq.ft)

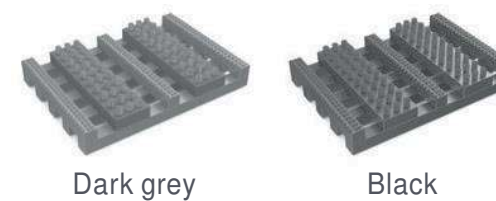
Frontrunner Brush Wide



Surface modules are supplied with factory fitted PVC ramped edging to four sides.

STANDARD COLOURS

More colours available on request



Dark grey

Black



FRONTRUNNER® ENTRY

Open-grid, slip-resistant entrance matting designed for high traffic areas.

Set the scene with Frontrunner Entry, the perfect entrance mat for high traffic areas.

The mat's aggressive tread pattern scrapes shoes and wheels clean, while the open grid flooring traps and collects dirt and debris, preventing it from coming inside. This expands the life of your floor finishes and keeps interiors looking stylish for longer.

Whether you're after a surface-mounted or recessed entrance mat, Frontrunner fits seamlessly with all well depths and contours effortlessly to the subfloor. Ideal for all environments, including walkways, retail, hospitality, education and commercial.

Seamless integration

Choose from modules with ramped PVC edging, rolls in standard widths and 10m (33') lengths, or order a custom size.

Simple installation

One-piece construction means you can cut to fit on site, with no previous site visits needed.

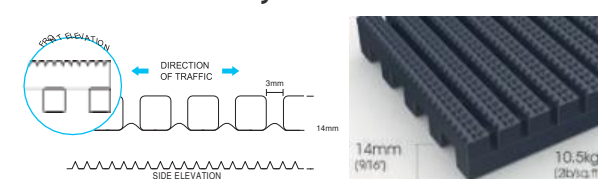
Easy to maintain

Simply roll or lift to clean, no special tools needed.

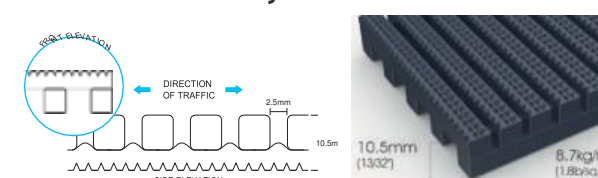
FEATURES	BENEFITS
Diamond cut pattern	Certified slip resistant (DIN51130:R11, ASTM 1677:0.6/0.6)
Two-layer, open-grid construction	Excellent drainage (DIN 51130:V10)
Close mesh grid	Wheel and heel proof
Made from flexible PVC	Easy to cut on site, contours to uneven surfaces
Comes in 10m (33') rolls or modules	Seamless installation

STANDARD SIZES		
	Frontrunner Entry	Low profile
Height	14mm (9/16")	10.5mm (13/32")
Standard roll options	10 x 0.6m (33' x 2') 10 x 0.91m (33' x 3') 5 x 1.2m (16' 6" x 4')	10 x 0.6m (33' x 2') 10 x 0.91m (33' x 3') 5 x 1.2m (16' 6" x 4')
Standard module options	0.8 x 1.2m (2'7" x 4') 1 x 1.5m (3'3" x 5") 1.1 x 2m (3'7" x 6'7")	
Weight	10.5 kg/m ² (2 lbs/sq.ft)	8.7 kg/m ² (1.8 lbs/sq.ft)

Frontrunner Entry



Frontrunner Entry Low Profile



Surface modules are supplied with factory fitted PVC ramped edging to four sides.

STANDARD COLOURS

More colours available on request





FRONTRUNNER® PLUS

Internal entrance matting with carpet inserts for maximum moisture removal.

Fronrunner Plus is an absorbent entrance mat specifically designed to not only stop dirt in its tracks, but moisture too.

The mat's aggressive tread pattern scrapes shoes and wheels clean, while the heavy-duty absorbent carpet inserts remove and dry moisture. This reduces cleaning internals, expands the life of your floor finishes and keeps interiors looking stylish for longer.

Slip resistant, wheel proof and heel proof, Fronrunner Plus is an ideal choice for commercial entrances, especially for businesses and shopping centres with high traffic. Choose from 50 colour and style combinations – you can also add a logo panel for added branding.

Seamless integration

Choose from modules with ramped PVC edging, rolls in standard widths and 10m (33') lengths, or order a custom size.

Simple installation

One-piece construction means you can cut to fit on site, with no previous site visits needed.

Easy to maintain

Simply roll or lift to clean, no special tools needed.

FEATURES

- Diamond cut pattern
- Two-layer, open-grid construction
- Absorbent carpet inserts
- Close mesh grid
- Comes in 10m (33') rolls or modules

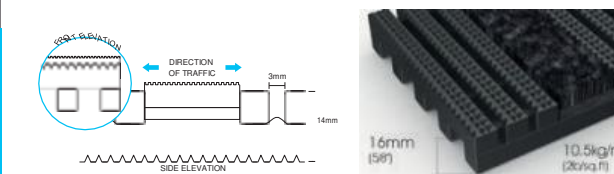
BENEFITS

- Slip resistant, high soil removal
- Excellent drainage
- Maximum moisture removal
- Wheel and heel proof
- Seamless installation

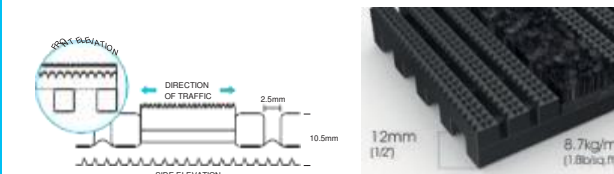
STANDARD SIZES

	Fronrunner Plus	Low profile
Height	14-16mm (9/16" - 5/8")	10.5-12mm (13/32" - 1/2")
Standard roll options	10 x 0.6m (33' x 2') 10x0.91m (33'x3') 5x1.2m (16'6" x 4')	10 x 0.6m (33' x 2') 10x0.91m (33'x3') 5x1.2m (16'6" x 4')
Standard module options	0.8 x 1.2m (2'7" x 4') 1x1.5m (3'3" x 4'11") 1.1x 2m (3'7" x 6'7")	
Weight	10.5kg/m ² (2lbs/sq.ft)	8.7 kg/m ² (1.6 lbs/sq.ft)

Fronrunner Plus



Fronrunner Plus Low Profile



Surface modules are supplied with factory fitted PVC ramped edging to four sides.

STANDARD COLOURS

More colours available on request



AVAILABLE CARPETS





FRONTRUNNER® SB

Solid-backed entrance matting designed for internal and external areas with no mat well.

Frontrunner SB is a low-profile, solid-backed mat that can be loose laid to integrate easily with your existing floor coverings.

Simply roll out, cut to fit and lay within your existing carpet tiles or luxury vinyl tiles – no mat well needed. You can also place directly on your current floor with ramped PVC edges to create a slip-resistant walkway.

The mat's ribbed pattern scrapes shoes and wheels clean, while the grid traps and collects any debris, helping to reduce the amount of dirt walked into the building.

Wheel and heel proof with excellent rolling resistance, it's perfect for commercial buildings and shopping centres with high traffic.

Seamless integration

Comes in 10m (33') rolls or order a custom size.

Simple installation

Simply roll out and cut to fit on site; contours to uneven surfaces.

Easy to maintain

Light to handle; no special cleaning tools needed.

FEATURES



Etched pattern



One layer hollow construction



Ribbed vinyl pattern with solid backing



6.5mm grid height



Close mesh grid

BENEFITS



Certified slip resistant (DIN51130:R11,ASTMC1028:0.6/0.6)



Light to handle



Easy to install, no need for recessed mat well



Loose lay or adhere to subfloor

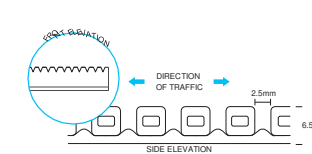


Wheel and heel proof

STANDARD SIZES

Frontrunner SB	
Height	6.5mm (1/4")
Standard roll options	10 x 1m (33' x 3'3')
Weight	6.3 kg/m ² (1.3lb/sq.ft)

Frontrunner SB



Surface modules are supplied with factory fitted PVC ramped edging to four sides.

STANDARD COLOURS

More colours available on request



Grey



Black



FRONTRUNNER® SB+

Solid-backed entrance matting with carpet inserts for maximum moisture removal in internal areas.

Designed for heavy-duty internal areas, Frontrunner SB+ is a low-profile, solid-backed mat that requires no recessed mat well.

Simply roll out, cut to fit and lay within your existing carpet tiles or luxury vinyl tiles – no mat well needed. You can also place directly on your current floor with ramped PVC edges to create a slip-resistant walkway.

The mat's etched pattern removes debris and the heavy-duty absorbent inserts remove and dry moisture, helping to reduce the amount of dirt walked into the building. Wheel and heel proof with excellent rolling resistance, it's perfect for commercial buildings and shopping centres with high traffic.

Seamless integration

Comes in 10m (33') rolls or order a custom size.

Simple installation

Simply roll out and cut to fit on site; contours to uneven surfaces.

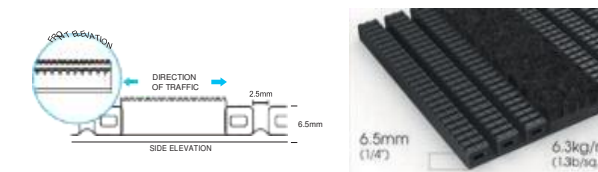
Easy to maintain

Light to handle; no special cleaning tools needed.

FEATURES	BENEFITS
Etched pattern	Certified slip resistant (DIN51130:R11,ASTMC1028:0.6/0.6)
One layer hollow construction	Light to handle
Ribbed vinyl pattern with solid backing	Easy to install, no need for recessed mat well
6.5mm grid height	Loose lay or adhere to subfloor
Close mesh grid	Wheel and heel proof

STANDARD SIZES	
	Frontrunner SB+
Height	6.5 - 8mm (1/4" - 5/16")
Standard roll options	10 x 1m (33' x 3'3")
Standard module options	1 x 1.5m (3'3" x 4'11")
Weight	6.3 kg/m ² (1.3lb/sq.ft)

Frontrunner SB+



Surface modules are supplied with factory fitted PVC ramped edging to four sides.

STANDARD COLOURS



AVAILABLE CARPETS



More colours available on request



FRONTRUNNER® XT

Extra slip-resistant entrance matting perfect for high traffic exterior and interior areas.

Frontrunner XT is a heavy-duty entrance mat designed to combat substantial amounts of dirt and large debris.

Its deep-etched tread scrapes shoes and wheels clean, while the open grid traps and collects the debris, preventing it from coming inside. This extra slip-resistant mat is ideal for walkways like hardwood decking and bridges that tend to get slippery in wet weather.

You can use Frontrunner XT inside and outside, or combine with entrance matting specifically designed for high traffic inside areas, like Frontrunner Plus.

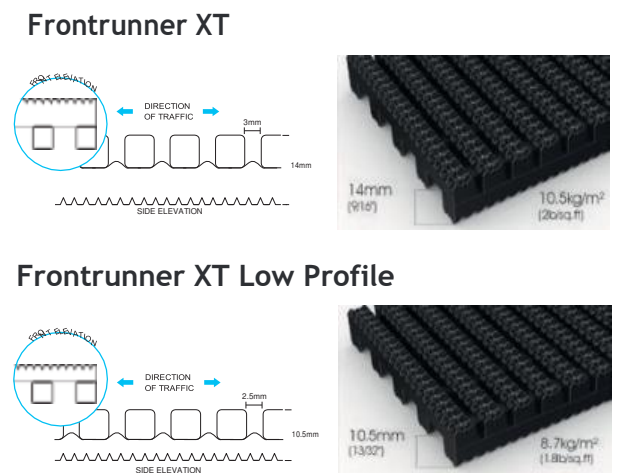
Seamless integration
Choose from rolls in standard widths and 10m (33') lengths or order a custom size.

Simple installation
One-piece construction means you can cut to fit on site, with no previous site visits needed.

Easy to maintain
Simply roll or lift to clean, no special tools needed.

FEATURES	BENEFITS
Diamond cut pattern	Certified slip resistant (DIN 51130: R12)
Two-layer, open-grid construction	Excellent drainage (DIN 51130:V10)
Close mesh grid	Wheel and heel proof
Made from flexible PVC	Easy to cut on site, contours to uneven surfaces
Comes in 10m (33') rolls or modules	Seamless installation

STANDARD SIZES		
	Frontrunner XT	Low profile
Height	14mm (9/16")	10.5mm (13/32")
Standard roll options	10 x 0.6m (33' x 2') 10 x 0.91m (33' x 3') 5 x 1.2m (16' 6" x 4')	10 x 0.6m (33' x 2') 10 x 0.91m (33' x 3') 5 x 1.2m (16' 6" x 4')
Weight	10.5kg/m ² (2lbs/sq.ft)	8.7kg/m ² (1.8lb/sq.ft)



STANDARD COLOURS

More colours available on request



Frontrunner ancillaries

RECESSED APPLICATIONS



ALUMINIUM R FRAME (H: 14mm)

For securing the matting on the left-to-right edges. Supplied in sections of 3m (10') length with fixing screws and plugs.

Size: 14mm x 12mm (9/16" x 15/32")

Colours: Anodised aluminium, powder coated dark grey, black



ALUMINIUM T FRAME (H: 14mm)

For dividing the matting into sections left-to-right – this makes it easier to lift and clean. Supplied in sections of 3m (10') length with fixing screws and plugs.

Colours: Anodised aluminium, powder coated dark grey, black



PVC J FRAME (H: 18mm)

For securing the matting on the left-to-right edges when installed against a wall. Supplied in sections of 3m (10') length.

Size: 18mm x 60mm (11/16" x 2 3/8")

Colours: Dark grey, black

RECESSED APPLICATIONS-LOW PROFILE



ALUMINIUM U SECTION (H: 14mm)

For securing different sections of matting together. Supplied in sections of 3m (10') length, with fixing screws and plugs.

Size: 14mm x 19mm (9/16" x 3/4")

Colours: Anodised aluminium, powder coated dark grey, black.



ALUMINIUM H SECTION (H: 14mm)

For securing different sections of matting together. Supplied in sections of 3m (10') length, with fixing screws and plugs.

Size: 14mm x 13mm (9/16" x 1/2")

Colours: Black, with mat insert colour specified.

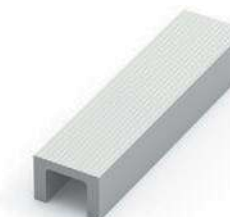


ALUMINIUM R FRAME (H: 10mm)

For securing the matting on the left-to-right edges. Supplied in sections of 3m (10') length with fixing screws and plugs.

Size: 10mm x 12mm (3/8" x 15/32")

Colours: Anodised aluminium, powder coated dark grey, black.



ALUMINIUM U SECTION (H: 10mm)

For securing different sections of matting together. Supplied in sections of 3m (10') length, with fixing screws and plugs.

Size: 10mm x 18mm (3/8" x 11/16")

Colours: Anodised aluminium, powder coated dark grey, black.



ALUMINIUM L FRAME (H: 15mm)

For securing the matting when installing around a circular door or non-rectangular space.

Size: 15mm x 2.7m length (5/8" x 8')

Colours: Anodised aluminium



ALUMINIUM TL FRAME (H: 14mm)

For dividing the matting into sections left-to-right – this makes it easier to lift and clean. Supplied in sections of 3m (10') length with fixing screws and plugs.

Size: 14mm x 55mm (9/16" x 2")

Colours: Anodised aluminium



ALUMINIUM Z FRAME (H: 10mm)

For securing the matting when installing next to ceramic tiles. Supplied in sections of 3.6m (12') length with fixing screws and plugs.

Size: 10mm x 24mm (3/8" x 15/16")

Colours: Anodised aluminium



ALUMINIUM H SECTION (H: 10mm)

For securing different sections of matting together. Supplied in sections of 3m (10') length, with fixing screws and plugs.

Size: 10mm x 13mm (3/8" x 1/2")

Colours: Black, with mat insert colour specified.

FOR RECESSED APPLICATIONS

		Fronrunner Brush & Fronrunner Brush Wide	Fronrunner Entry & Fronrunner Plus	Fronrunner Entry low profile & Fronrunner Plus low profile	Fronrunner XT	Fronrunner XT low profile
	R Frame Height: 14mm	R	R		R	
	R Frame (low profile) Height: 10mm			R		R
	H Section Height: 14mm					
	H Section (low profile) Height: 10mm			H		H
	J Frame Height: 18mm	J	J		J	
	T Frame Height: 14mm	T	T		T	
	TL Frame Height: 14mm	TL	TL		TL	
	L Frame Height: 15mm					
	U Section Height: 14mm					
	U Section (low profile) Height: 10mm					
	Z Frame Height: 10mm					

Recessed installations

A full range of frames and dividers are purpose designed to provide level and smooth transitions, and are simple to install during fit-out.

R 'R' frame
Secures and caps left-to-right edges of 14mm and 10.5mm matting. Made from aluminium.

Z 'Z' frame
Secures and caps left-to-right edges of 10.5mm matting in conjunction with ceramic tiles. Made from aluminium.

U 'U' section
A divider or frame for front-to-back installations of 14mm and 10.5mm matting. Made from aluminium.

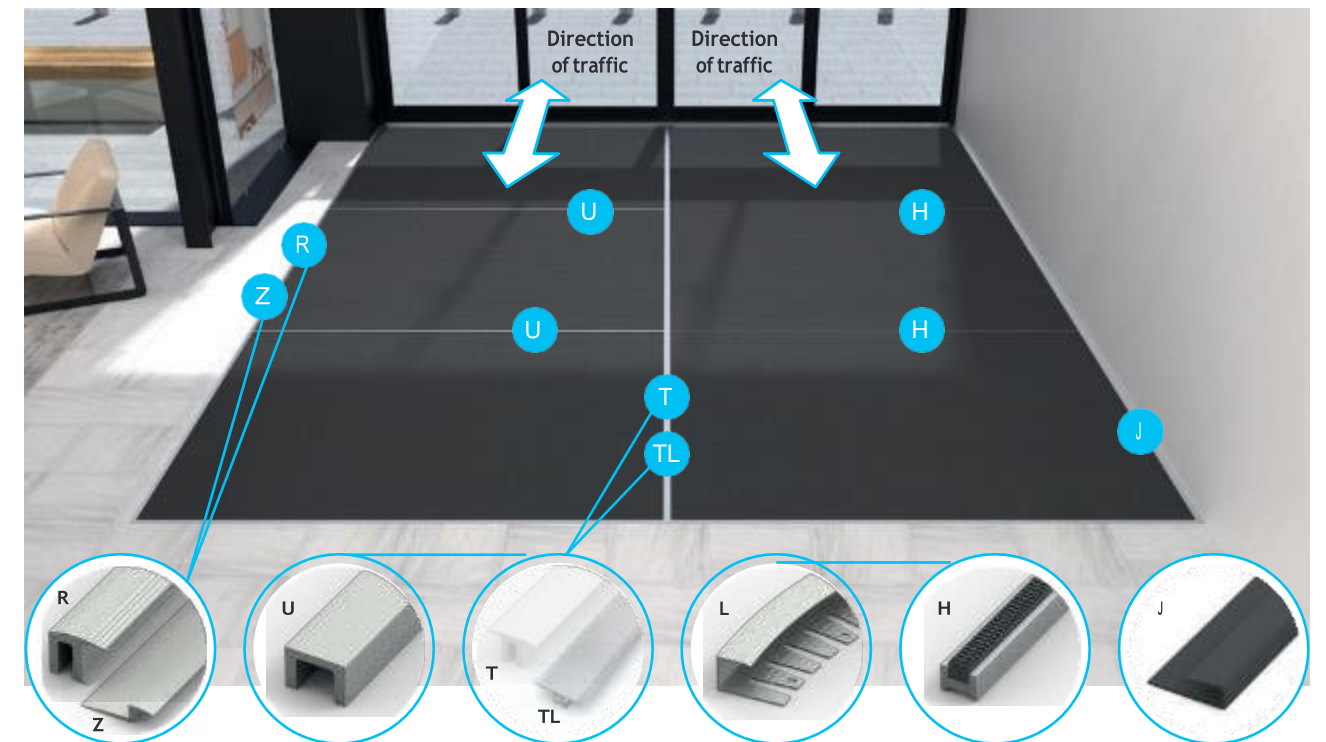
T / 'TL' frame
Divides sections left-to-right on 14mm large installations – this makes it easier to lift and clean. Made from aluminium.

H 'H' section
An invisible divider for front-to-back installations of 14mm and 10.5mm matting. Made from aluminium with matching PVC insert.

J 'J' frame
Secures and caps left-to-right edges of 14mm matting when installed against a wall. Made from rigid PVC.

L 'L' frame
For circular door and non-rectangular installations of 14mm matting. Formable aluminium trim.

TL 'TL' frame
Formable aluminium trim.



Frame colours

Aluminium frames come in a natural anodised finish. For design elegance and colour continuity, the U, R and T frames are all available in dark grey and black. The J frame, in rigid PVC, is also available in dark grey and black.



Frontrunner ancillaries

SURFACE-MOUNTED APPLICATIONS



PVC EDGING
(H: 14mm, W: 60mm)
 Supplied in rolls of 10.1m (33') length with cold welding paste.
Size: 14mm x 60mm x 10.1m (9/16" x 2 1/2" x 33')
Colours: Black, dark grey, dark brown, holly green, Oxford blue, yellow



PVC EDGING
(H: 14mm, W: 100mm)
 Supplied in rolls of 10.1m (33') length with cold welding paste.
Size: 14mm x 100mm x 10.1m (9/16" x 3 3/4" x 33')
Colours: Black, dark grey, yellow



ALUMINIUM EDGING
(H: 14mm)
 Supplied in sections of 2m (6'6") length with fixing screws and plugs.
Size: 14mm x 45mm x 2m (9/16" x 1 13/16" x 6'6")
Colours: Anodised aluminium and powder coated yellow



PVC SNAP TRACK (H: 14mm)
 Two-part snap track that can be welded together to join rolls end-to-end or side-to-side to cover large areas. Supplied with cold welding paste.
Size: 14mm x 2.5m (9/16" x 8'2")
Colours: Black and dark grey



CONNECTOR CLIPS: SIDE-TO-SIDE (H: 14mm)
 For joining sections of matting together side-to-side.
 Supplied in packs of 10
Size: 14mm
Colours: Black

SURFACE-MOUNTED APPLICATIONS - LOW PROFILE



PVC EDGING
(H: 10mm, W: 50mm)
 Supplied in rolls of 10.1m (33') length with cold welding paste.
Size: 10mm x 50mm x 10.1m (3/8" x 2" x 33')
Colours: Black and dark grey



PVC SNAP TRACK (H: 10.5mm)
 Two-part snap track that can be welded together to join rolls end-to-end or side-to-side to cover large areas. Supplied with cold welding paste.
Size: 10.5mm x 2.5m (13/32" x 8'2")
Colours: Dark grey



CONNECTOR CLIPS: SIDE-TO-SIDE (H: 10mm)
 For joining sections of low profile matting together side-to-side.
 Supplied in packs of 10
Size: 10mm
Colours: Black

SURFACE-MOUNTED APPLICATIONS - SB & SB+



PVC EDGING
 Supplied in rolls of 60m (197") length with cold welding paste.
Size: 6.5mm x 30mm x 60m (1/4" x 1" x 197")
Colours: Black, dark grey

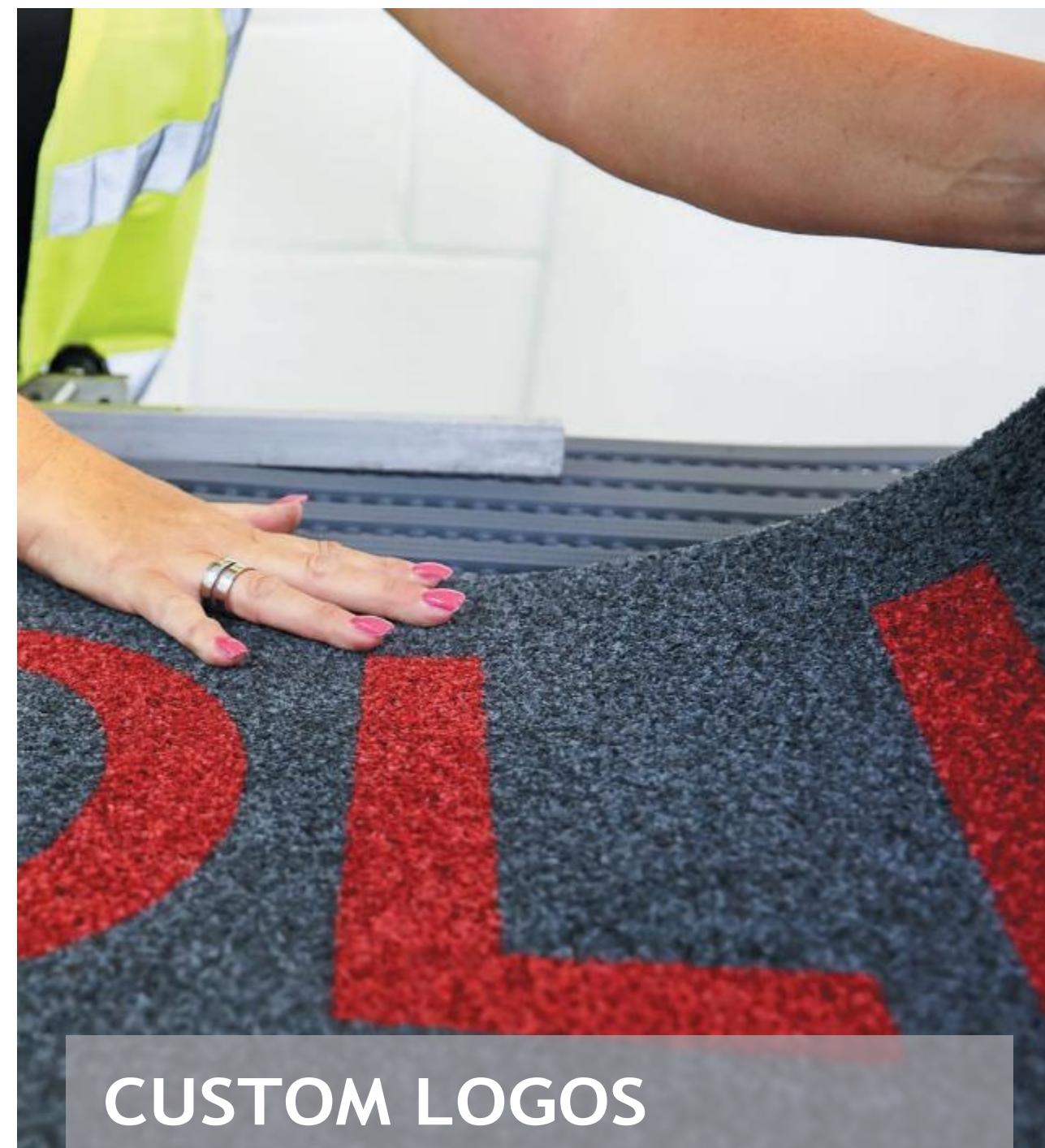


PVC JOINING STRIP
 Can be welded to join rolls end-to-end or side-to-side when doing large installations.
Size: 3.5mm x 3.6m (1/8" x 11'9")
Colours: Black

FOR SURFACE-MOUNTED APPLICATIONS

		Fronrunner Brush & Fronrunner Brush Wide	Fronrunner Entry & Fronrunner Plus	Fronrunner Entry low profile & Fronrunner Plus low profile	Fronrunner XT	Fronrunner XT low profile	Fronrunner SB & SB+
	PVC edging H:14mm W:100mm Colours: BK, DG, YW	●	●				
	PVC edging H:14mm W:60mm Colours: BK, DG, DB, HG, OB, YW	●	●		●		
	PVC edging H:10mm W:50mm Colours: BK, DG			●		●	
	PVC edging H: 6.5mm x 30mm x 60m. W: 50mm Colours: BK, DG						●
	PVC joining strip H:3.5mm x 3.6m. Colours: BK						●
	Connector clips side-by-side H: 14mm Colours: BK	●	●		●		
	Connector clips side-by-side H: 10mm Colours: BK			●		●	
	PVC snap track H: 14mm Colours: BK, DG	●	●		●		
	PVC snap track H: 10.5mm Colours: DG			●		●	
	Aluminium edging H:14mm Colours: AA, YW	●	●		●		

- AA
Anodised
aluminium
- YW
Yellow
- OB
Oxford blue
- HG
Holly green
- DG
Dark grey
- DB
Dark brown
- BK
Black



CUSTOM LOGOS

We can incorporate a logo panel on any recessed or surface mounted modular mats. The logo runs the width of the mat well and can either be 30cm or 45cm tall.

Get in touch with a member of our team to find out more.



