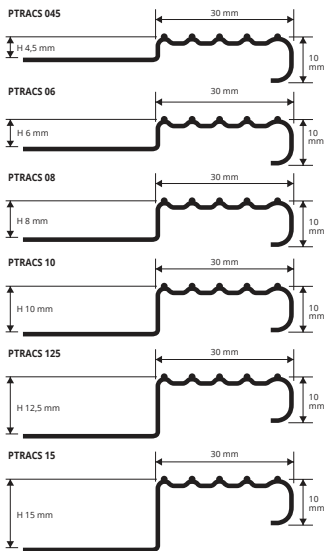
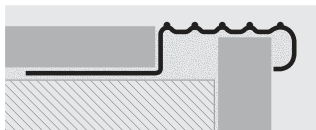


PROSTAR ACC

SATINED STAINLESS STEEL AISI 304/1.4301-V2A



EXAMPLES OF LAYING



PROSTAR ACC is steps protecting technical profile, designed and conceived to make the step scales made of ceramic, porcelain stoneware and others nonskid and non-slip ones ; it's to be applied before the step laying process. Manufactured in aisi 304/1.4301-V2A glazed stainless steel, with the superior side level crimped in order to increase its adhesion. It replaces special ceramic elements in refined, resistant and economic way. It is compulsory in public places for the accident prevention. It is recommended for elegant, refined industrial, commercial and private environments: available in H 4,5-6-8-10-12,5-15 mm versions. Combining with the entire series of steel profiles recommended.



SATIN FINISH STAINLESS ST. AISI 304/1.4301-V2A with protective film
bar length 2,7 lm - pack 15 Pcs - 40,5 lm - 10/10 mm

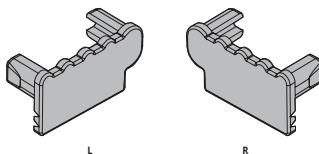
Article	H mm		
PTRACS 045	4,5		
PTRACS 06	6		
PTRACS 08	8		
PTRACS 10	10		
PTRACS 125	12,5		
PTRACS 15	15		

Available in SATINED STAINLESS STEEL AISI 316L/1.440-V4A (minimum quantity order 270 lm - price and delivery time to be agreed).

END CAP IN VARNISHED PLASTIC SATINED STAINLESS STEEL EFFECT
pack 2 Pcs (1 right and 1 left)

Article	H mm
TPTRACS/1	4,5 + 15

Articles not for sale singly



LAYING INSTRUCTIONS

1. Choose the PROSTAR ACC of the desired height and material on the basis of the tile (steps) thickness. 2. Fix the first rising part laying it down at its appropriate and definitive level. 3. Fill completely the empty spaces under the profile with the tile adhesive. 4. Spread out the adhesive on the tread, lay down the profile with its cut base immersed completely in adhesive and align it so that the profile covers the riser tile edge. 5. Lay down the tread tiles and align them with the superior grazing part of the profile by drawing its back close and filling the inner space with the adhesive.

COLOURS

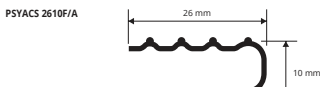


ACS - Satin finish stainless st.
AISI 304/1.4301-V2A

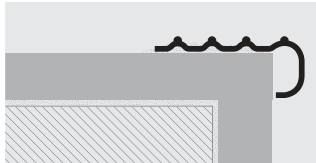
SUITABLE FOR USE IN CONTACT WITH FOODSTUFFS

PROSTYLE 2610

SATINED STAINLESS STEEL AISI 304/1.4301-V2A
SELF ADHESIVE OR PUNCHED



EXAMPLES AND INSTRUCTIONS FOR LAYING METHODS



Adhesive version

1. Choose the suitable profile and cut it to the necessary length. 2. Degrease, wash and clean the solid surface thoroughly. 3. Remove the protective paper from the adhesive. 4. Lay the profile by applying pressure evenly over the whole surface without using a hammer.

Punched version

1. Choose the suitable profile and cut it to the necessary length. 2. Mark the position of the holes using the existing holes in the profile as reference. 3. Insert the screw anchors into the drilled holes. 4. Fix the profile using flathead screws suitable for the relative slots in the profile.

PROSTYLE 2610 is steps protecting technical profile, designed and conceived to keep the step scales made of ceramic, porcelain stoneware, wood, marble and others nonskid and non-slip ones ; it's to be applied after the step laying process or in the already present rooms. Manufactured in aisi 304/1.4301-V2A glazed stainless steel, with the superior side level crimped in order to increase its adhesion. It replaces special ceramic elements in refined, resistant and economic way. It's ideal for the edges protection and screening as well as of the corner between the rising and the tread which is the point of the greatest strain. It is compulsory in public places for the accident prevention. It is recommended for elegant, refined industrial, commercial and private environments. Available in drilled version or in with adhesive one.



SATIN FINISH STAINLESS STEEL AISI 304/1.4301-V2A with protective film - bar length 2,7 lm - pack 20 Pcs - 54 lm - 10/10mm

Article	H mm		
PSYACS 2610F (punched)	10		
PSYACS 2610A (with adhesive)	10		

Available in SATINED STAINLESS STEEL AISI 316L/1.440-V4A (minimum quantity order 270 lm - price and delivery time to be agreed).

COLOURS



ACS - Satin finish stainless st.
AISI 304/1.4301-V2A

SUITABLE FOR USE IN CONTACT WITH FOODSTUFFS

* = On demand, price and delivery time to be agreed.